

# tielbürger®

- Ⓚ Ersatzteilliste
- ⓕ Pièces détachées
- ⓖⓑ Spare parts list
- Ⓛ Lista ricambi
- Ⓝ Deleliste

**tw50, tw50s**



## Inhaltsverzeichnis

|   |    |
|---|----|
| <b>Motor Honda GXV 160</b> .....                        | 4  |
| Moteur  |    |
| Motor   |    |
| Motore  |    |
| Motor   |    |
| <b>Motor B&amp;S 850 iC</b> .....                       | 6  |
| Moteur  |    |
| Motor   |    |
| Motore  |    |
| Motor   |    |
| <b>Motor B&amp;S 675 iS</b> .....                       | 8  |
| Moteur  |    |
| Motor   |    |
| Motore  |    |
| Motor   |    |
| <b>Motor B&amp;S Ready Start / B&amp;S 675EXi</b> ..... | 10 |
| Moteur  |    |
| Motor   |    |
| Motore  |    |
| Motor   |    |
| <b>Motor Honda GCV 160</b> .....                        | 12 |
| Moteur  |    |
| Motor   |    |
| Motore  |    |
| Motor   |    |
| <b>Gehäuse tw50</b> .....                               | 14 |
| Boite   |    |
| Housing   |    |
| Scatola   |    |
| Hus   |    |
| <b>Gehäuse tw50s</b> .....                              | 16 |
| Boite   |    |
| Housing   |    |
| Scatola   |    |
| Hus   |    |
| <b>Keilriemenspanner</b> .....                          | 18 |
| Tendeur de courroie                                     |    |
| Vbelt tensioner   |    |
| Tendicinghia  |    |
| Kileremstrammer   |    |
| <b>Vorderteil</b> .....                                 | 20 |
| Bloc avant  |    |
| Mowing drive assy                                       |    |
| Parte, anteriore  |    |
| Forsat  |    |
| <b>Werkzeug</b> .....                                   | 22 |
| Outil   |    |
| Tool  |    |
| Strumento   |    |
| Verktøy   |    |

## Inhaltsverzeichnis

|   |    |
|---|----|
| <b>Prallschutz tw50</b> .....                       | 24 |
| Protecteur  |    |
| Protection oder Cover                               |    |
| Protezione  |    |
| Deksel  |    |
| <b>Lenker</b> .....                                 | 26 |
| Mancheron.  |    |
| Handle bars   |    |
| Manubrio  |    |
| Styre   |    |
| <b>Zubehör seitliche Schutzabdeckung tw50</b> ..... | 28 |
| Accessoires côté couvercle de protection.           |    |
| Accessory side protection cover                     |    |
| Accessori lato coperchio protettivo                 |    |
| Tilbehør sidebeskyttelsesdeksel                     |    |
| <b>Zubehör Stützrolle tw50/tw50s</b> .....          | 30 |
| Accessoires rôle de soutien                         |    |
| Accessories Support roller                          |    |
| Accessori sostenere il ruolo                        |    |
| Tilbehør birolle                                    |    |

### WICHTIG!

Die Spalte „Bemerkung“ hilft Ihnen, Teile zu identifizieren.

Verwenden Sie ausschließlich Originalersatzteile vom Hersteller. Dadurch wird die sichere Funktion des Gerätes gewährleistet.

Positionsnummern in Klammern sind Verschleißteile.

### NOTE!

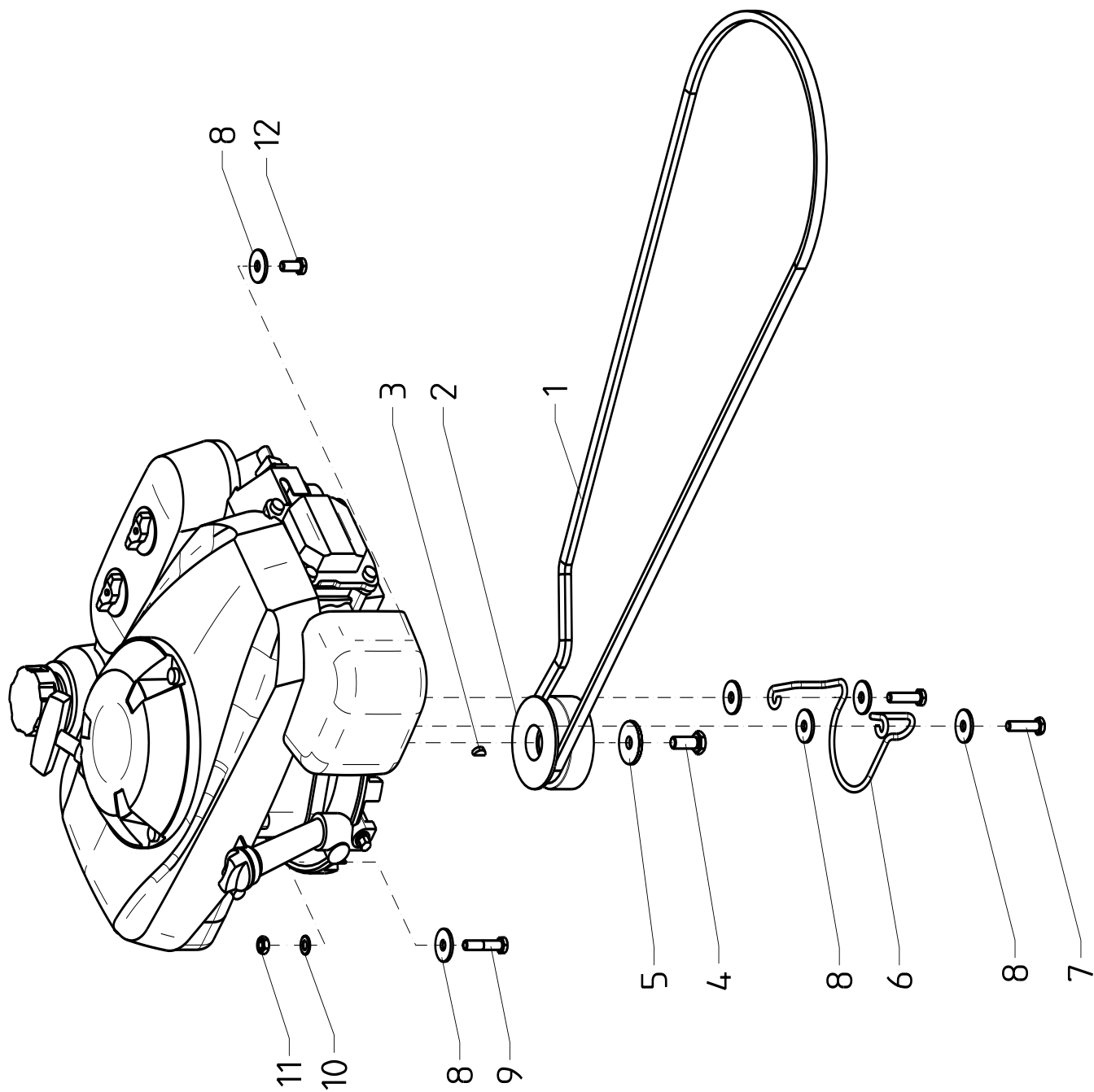
The column labelled „Comments“ is to help you in identifying parts.

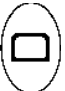


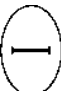

Only use genuine replacement parts from the manufacturer. These will ensure that the machine functions correctly.

Item numbers in parentheses are parts that are subject to wear.

# Motor Honda GXV 160

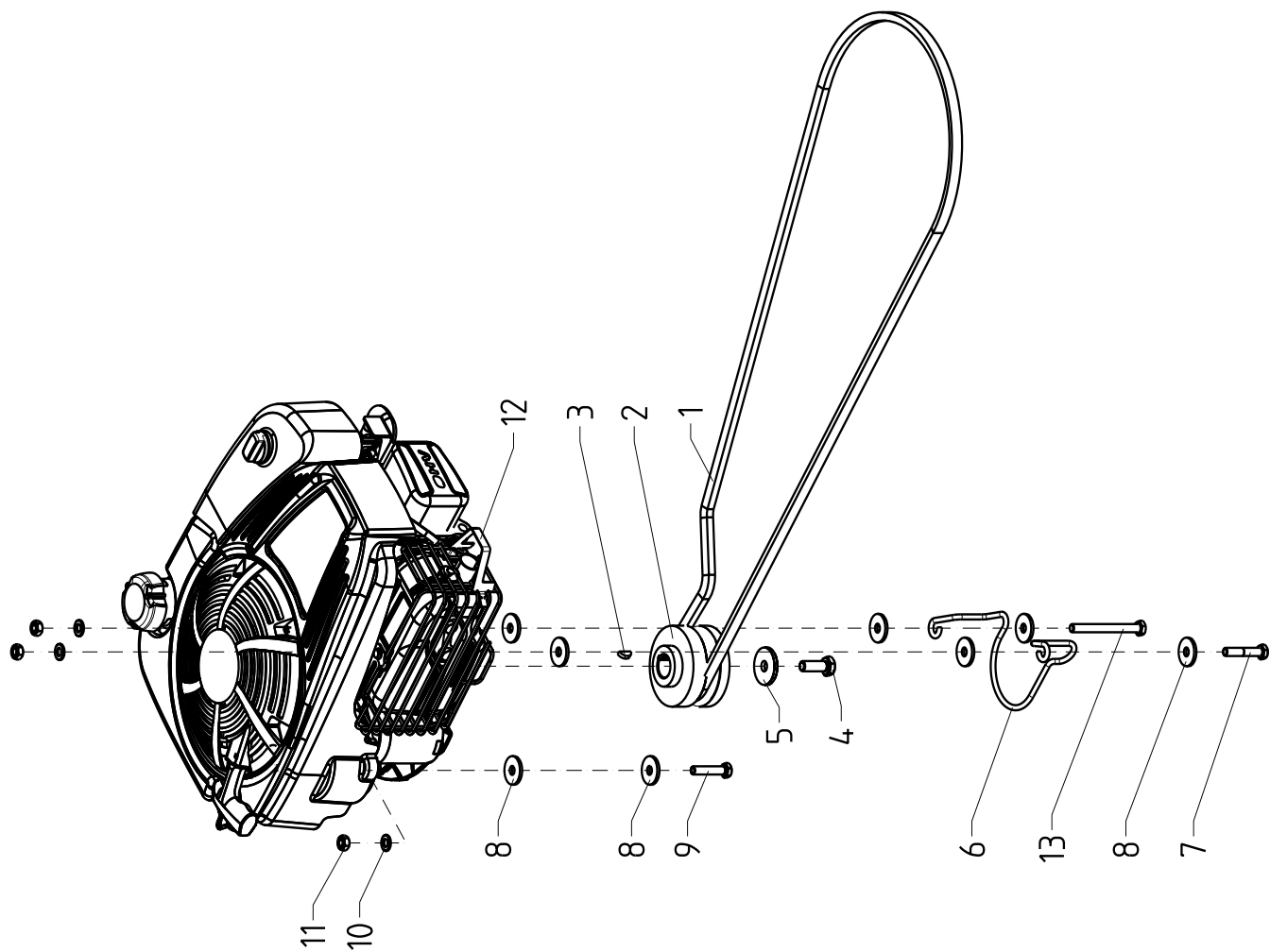
Motor über den Honda-Fachhändler beziehen.








| Pos.-Nr.<br>Rep. | Bestellnummer<br>Référéce    | Anzahl<br>Qté. | Bezeichnung   | Désignation   | Description   | Descrizione   | Benevnelse  | Bemerkung<br>Remarque<br>Remarks<br>Osservazione<br>Bemerkninger |
|------------------|------------------------------|----------------|---|---|---|---|---|--|
| Pos.<br>Pos.     | Article number<br>Nr. codice | Quant.<br>Q.tà |  |  |  |  |  |  |
| Bilde-Nr.        | Bestillings-Nr               | Antall         |   |   |   |   |   |  |
| (1)              | HB-112-311                   | 1              | Spezialkeilriemen   | Courroie  | Vbelt   | Cinghia   | Kilerem   |  |
| 2                | DX-001-142e                  | 1              | Keilriemenscheibe   | Poulie  | Vbelt pulley  | Puleggia  | Kileremskive  |  |
| 3                | KH-020-102                   | 1              | Sch.-Feder  | Rondelle d'ajustage   | Woodruffkey   | Linguetta a disco   | Kile  |  |
| 4                | HO-090-332z                  | 1              | Zoll-6kt-Schraube   | Vis au pouce  | Whitworthbolt (screw)   | Vite in pollici   | Skru  | 3/8" -24UNF- 1"  |
| 5                | DA-332-120z                  | 1              | Scheibe   | Rondelle  | Washer  | Rondella  | Skive   |  |
| 6                | DC-030-016z                  | 1              | Keilriemenführung   | Guidage de courroie   | Vbelt guide   | Guida cinghia   | Kileremsføring  |  |
| 7                | HO-090-305z                  | 2              | Zoll-6kt-Schraube   | Vis au pouce  | Whitworthbolt (screw)   | Vite in pollici   | Skru  | 5/16" -24UNF- 1 1/2"   |
| 8                | HW-030-008z                  | 6              | Scheibe   | Rondelle  | Washer  | Rondella  | Skive   | R 9.0  |
| 9                | HO-010-088z                  | 1              | Sechskantschraube   | Vis à six pans  | Hexagon bolt  | Vite esagonale  | Sekskantskrue   | M8x45  |
| 10               | HW-010-007z                  | 1              | Scheibe   | Rondelle  | Washer  | Rondella  | Skive   | B 8.4  |
| 11               | HR-010-005z                  | 1              | Sechskantmutter   | Écrou à six pans  | Hexagon nut   | Dado esagonale  | Sekskantmutter  | M8   |
| 12               | HO-090-302z                  | 1              | Zoll-6kt-Schraube   | Vis au pouce  | Whitworthbolt (screw)   | Vite in pollici   | Skru  | 5/16" -24UNF- 7/8"   |

# Motor B&S 850 iC

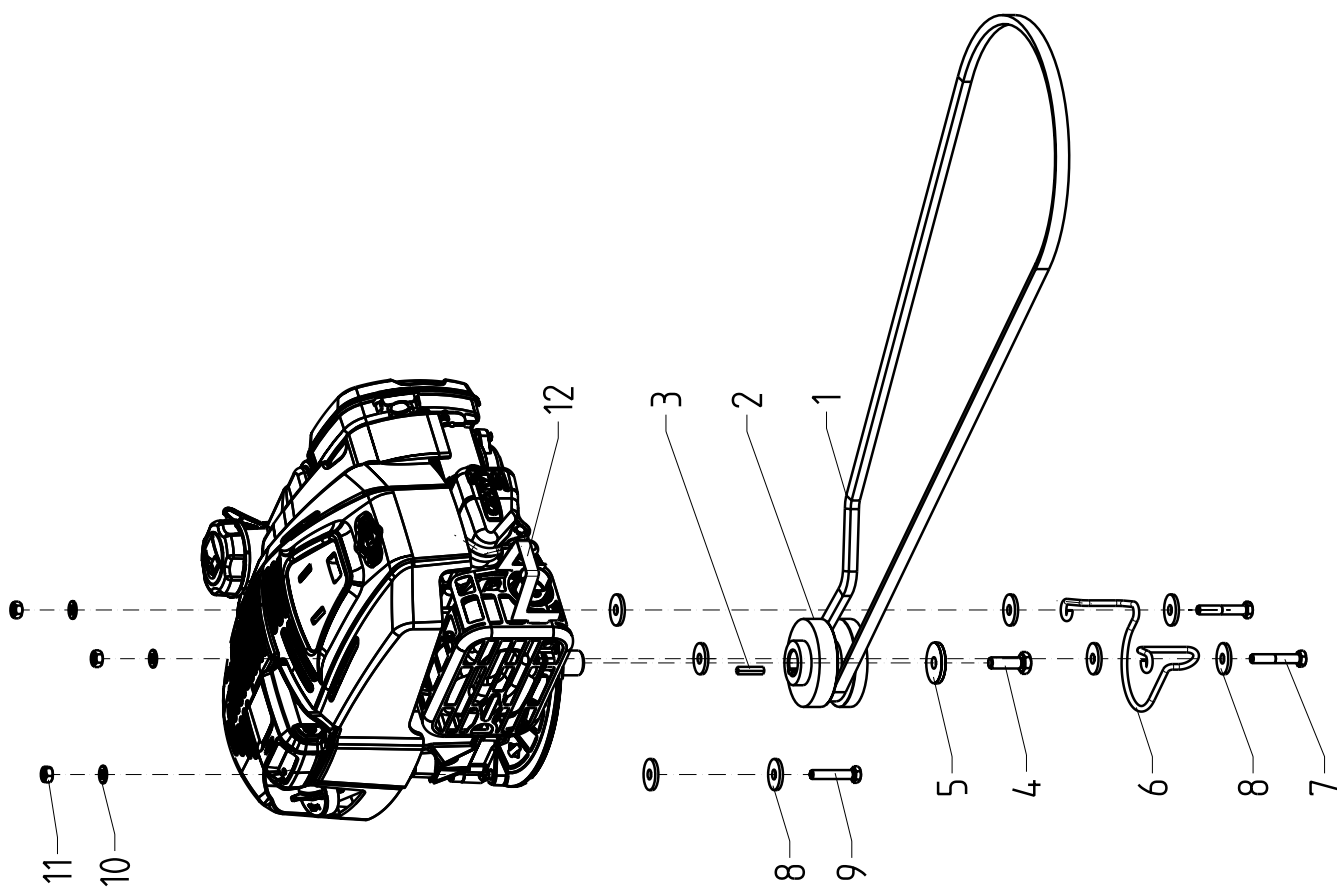
Motor über den B&S-Fachhändler beziehen.



| Pos.-Nr.<br>Rep.          | Bestellnummer<br>Réfrence                      | Anzahl<br>Qté.           | Bezeichnung   | Désignation   | Description   | Descrizione   | Benevnelse  | Bemerkung<br>Remarque<br>Remarks<br>Osservazione<br>Bemerkninger |
|---------------------------|--|--------------------------|---|---|---|---|---|--|
| Pos.<br>Pos.<br>Bilde-Nr. | Article number<br>Nr. codice<br>Bestillings-Nr | Quant.<br>Q.tà<br>Antall |  |  |  |  |  |  |
| (1)                       | HB-112-311                                     | 1                        | Spezialkeilriemen   | Courroie  | Vbelt   | Cinghia   | Kilerem   |  |
| 2                         | DX-001-143e                                    | 1                        | Keilriemenscheibe   | Poulie  | Vbelt pulley  | Puleggia  | Kileremskive  |  |
| 3                         | KH-020-102                                     | 1                        | Sch.-Feder  | Rondelle d'ajustage   | Woodruffkey   | Linguetta a disco   | Kile  |  |
| 4                         | HO-090-332z                                    | 1                        | Zoll-6kt-Schraube   | Vis au pouce  | Whitworthbolt (screw)   | Vite in pollici   | Skru  | 3/8" -24UNF- 1"  |
| 5                         | DA-332-120z                                    | 1                        | Scheibe   | Rondelle  | Washer  | Rondella  | Skive   |  |
| 6                         | DC-030-016z                                    | 1                        | Keilriemenführung   | Guidage de courroie   | Vbelt guide   | Guida cinghia   | Kileremsføring  |  |
| 7                         | HO-010-088z                                    | 1                        | Sechskantschraube   | Vis à six pans  | Hexagon bolt  | Vite esagonale  | Sekskantskrue   | M8x45 DIN931   |
| 8                         | HW-030-008z                                    | 8                        | Scheibe   | Rondelle  | Washer  | Rondella  | Skive   | R 9.0  |
| 9                         | HO-010-087z                                    | 1                        | Sechskantschraube   | Vis à six pans  | Hexagon bolt  | Vite esagonale  | Sekskantskrue   | M8x40  |
| 10                        | HW-010-007z                                    | 3                        | Scheibe   | Rondelle  | Washer  | Rondella  | Skive   | B 8.4  |
| 11                        | HR-010-005z                                    | 3                        | Sechskantmutter   | Écrou à six pans  | Hexagon nut   | Dado esagonale  | Sekskantmutter  | M8   |
| 12                        | DA-140-589                                     | 1                        | Schutzbügel   | Arceau de sécurité  | Protecting bar  | Arco protezione   | Bøyle   |  |
| 13                        | HO-010-096z                                    | 1                        | Sechskantschraube   | Vis à six pans  | Hexagon bolt  | Vite esagonale  | Sekskantskrue   | M8x85 DIN931   |

# Motor B&S 675 iS

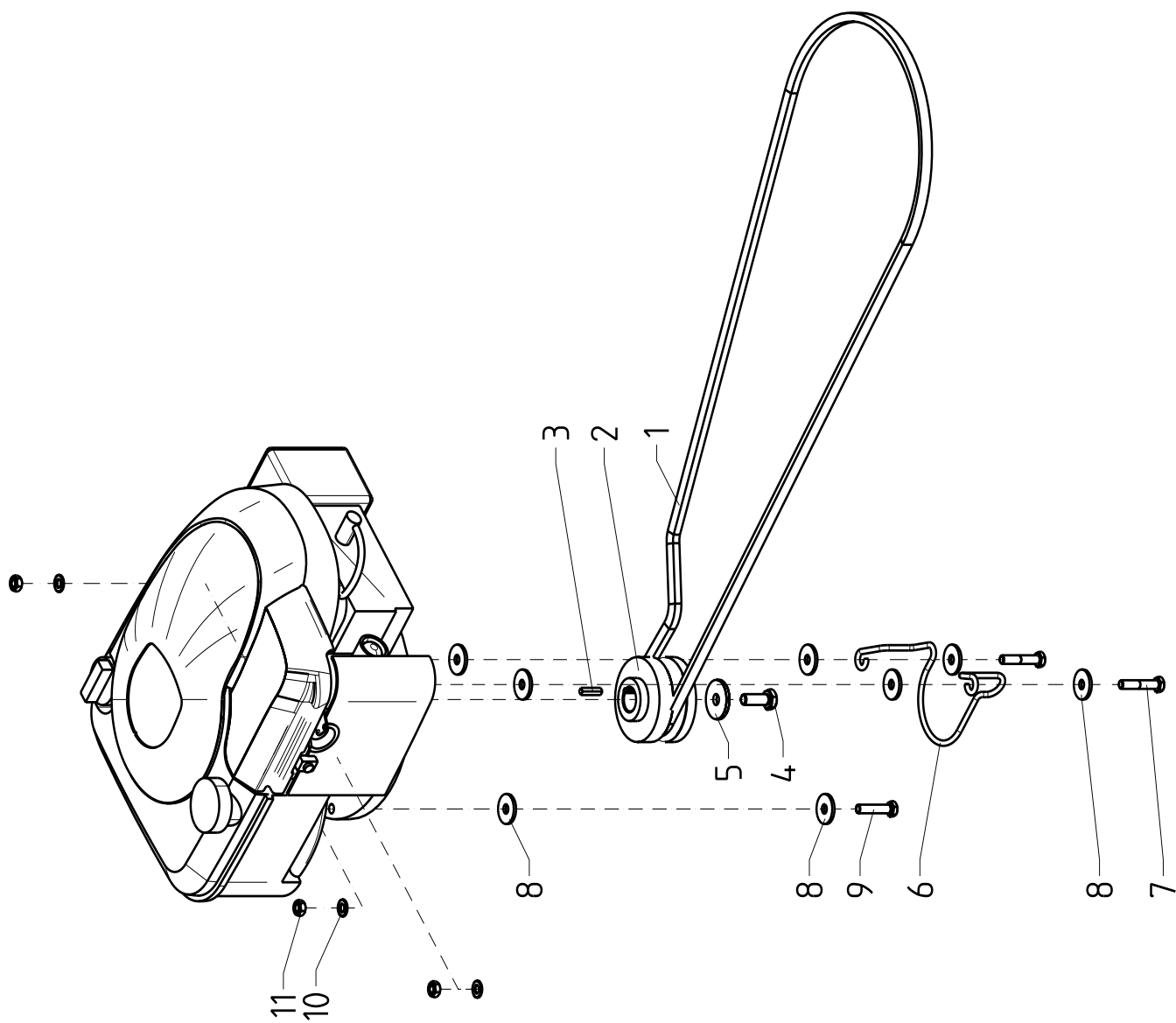
Motor über den B&S-Fachhändler beziehen.



| Pos.-Nr.  | Bestellnummer  | Anzahl | Bezeichnung       | Désignation         | Description           | Descrizione          | Benevnelse     | Bemerkung       |
|-----------|----------------|--------|-------------------|---------------------|-----------------------|----------------------|----------------|-----------------|
| Rep.      | Référence      | Qté.   |                   |                     |                       |                      |                | Remarque        |
| Pos.      | Article number | Quant. |                   |                     |                       |                      |                | Remarks         |
| Pos.      | Nr. codice     | Q.tà   |                   |                     |                       |                      |                | Osservazione    |
| Bilde-Nr. | Bestillings-Nr | Antall |                   |                     |                       |                      |                | Bemerkninger    |
| (1)       | HB-112-311     | 1      | Spezialkeilriemen | Courroie            | Vbelt                 | Cinghia              | Kilerem        |                 |
| 2         | DX-001-143e    | 1      | Keilriemenscheibe | Poulie              | Vbelt pulley          | Puleggia             | Kileremskive   |                 |
| 3         | KH-030-056     | 1      | Zollpaßfeder      | Ressort au pouce    | Parallel key          | Linguetta in pollici | Kile           |                 |
| 4         | HO-090-332z    | 1      | Zoll-6kt-Schraube | Vis au pouce        | Whitworthbolt (screw) | Vite in pollici      | Skru           | 3/8" -24UNF- 1" |
| 5         | DA-332-120z    | 1      | Scheibe           | Rondelle            | Washer                | Rondella             | Skive          |                 |
| 6         | DC-030-016z    | 1      | Keilriemenführung | Guidage de courroie | Vbelt guide           | Guida cinghia        | Kileremsføring |                 |
| 7         | HO-010-088z    | 2      | Sechskantschraube | Vis à six pans      | Hexagon bolt          | Vite esagonale       | Sekskantskrue  | M8x45 DIN931    |
| 8         | HW-030-008z    | 8      | Scheibe           | Rondelle            | Washer                | Rondella             | Skive          | R 9.0           |
| 9         | HO-010-087z    | 1      | Sechskantschraube | Vis à six pans      | Hexagon bolt          | Vite esagonale       | Sekskantskrue  | M8x40 DIN931    |
| 10        | HW-010-007z    | 3      | Scheibe           | Rondelle            | Washer                | Rondella             | Skive          | B 8.4           |
| 11        | HR-010-005z    | 3      | Sechskantmutter   | Écrou à six pans    | Hexagon nut           | Dado esagonale       | Sekskantmutter | M8              |
| 12        | DA-140-636     | 1      | Schutzbügel       | Arceau de sécurité  | Protecting bar        | Arco protezione      | Bøyle          |                 |

# Motor B&S Ready Start / B&S 675 EXi

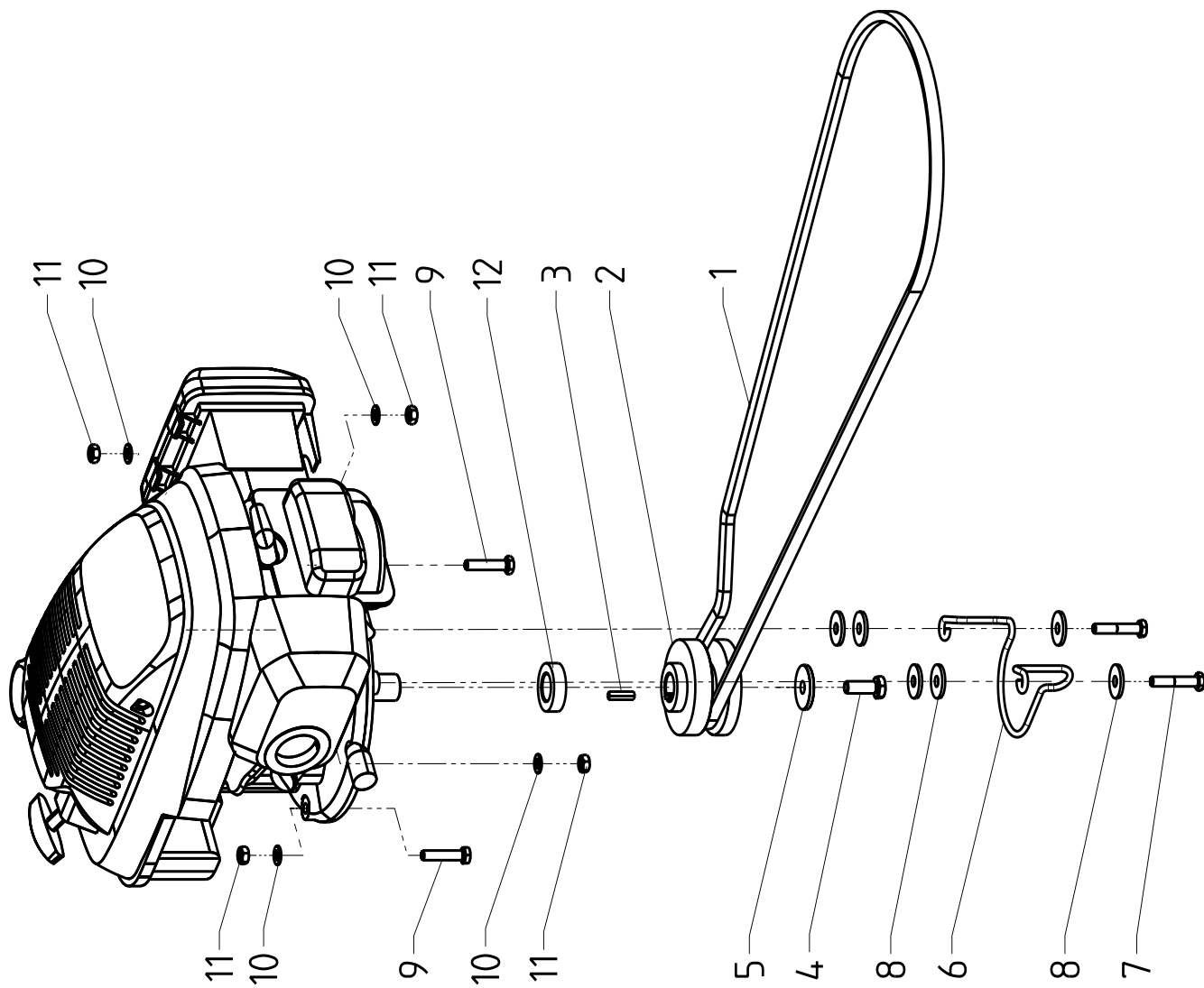
Motor über den B&S-Fachhändler beziehen.



| Pos.-Nr.  | Bestellnummer  | Anzahl | Bezeichnung       | Désignation         | Description           | Descrizione          | Benevnelse     | Bemerkung       |
|-----------|----------------|--------|-------------------|---------------------|-----------------------|----------------------|----------------|-----------------|
| Rep.      | Référence      | Qté.   |                   |                     |                       |                      |                | Remarks         |
| Pos.      | Article number | Quant. |                   |                     |                       |                      |                | Osservazione    |
| Pos.      | Nr. codice     | Q.tà   |                   |                     |                       |                      |                | Bemerkninger    |
| Bilde-Nr. | Bestillings-Nr | Antall |                   |                     |                       |                      |                |                 |
| (1)       | HB-112-311     | 1      | Spezialkeilriemen | Courroie            | Vbelt                 | Cinghia              | Kilere         |                 |
| 2         | DX-001-143e    | 1      | Keilriemenscheibe | Poulie              | Vbelt pulley          | Puleggia             | Kileremskive   |                 |
| 3         | KH-030-056     | 1      | Zollpaßfeder      | Ressort au pouce    | Parallel key          | Linguetta in pollici | Kile           |                 |
| 4         | HO-090-332z    | 1      | Zoll-6kt-Schraube | Vis au pouce        | Whitworthbolt (screw) | Vite in pollici      | Skru           | 3/8" -24UNF- 1" |
| 5         | DA-332-120z    | 1      | Scheibe           | Rondelle            | Washer                | Rondella             | Skive          |                 |
| 6         | DC-030-016z    | 1      | Keilriemenführung | Guidage de courroie | Vbelt guide           | Guida cinghia        | Kileremsføring |                 |
| 7         | HO-010-088z    | 2      | Sechskantschraube | Vis à six pans      | Hexagon bolt          | Vite esagonale       | Sekskantskrue  | M8x45           |
| 8         | HW-030-008z    | 8      | Scheibe           | Rondelle            | Washer                | Rondella             | Skive          | R 9.0           |
| 9         | HO-010-087z    | 1      | Sechskantschraube | Vis à six pans      | Hexagon bolt          | Vite esagonale       | Sekskantskrue  | M8x40           |
| 10        | HW-010-007z    | 3      | Scheibe           | Rondelle            | Washer                | Rondella             | Skive          | B 8.4           |
| 11        | HR-010-005z    | 3      | Sechskantmutter   | Écrou à six pans    | Hexagon nut           | Dado esagonale       | Sekskantmutter | M8              |

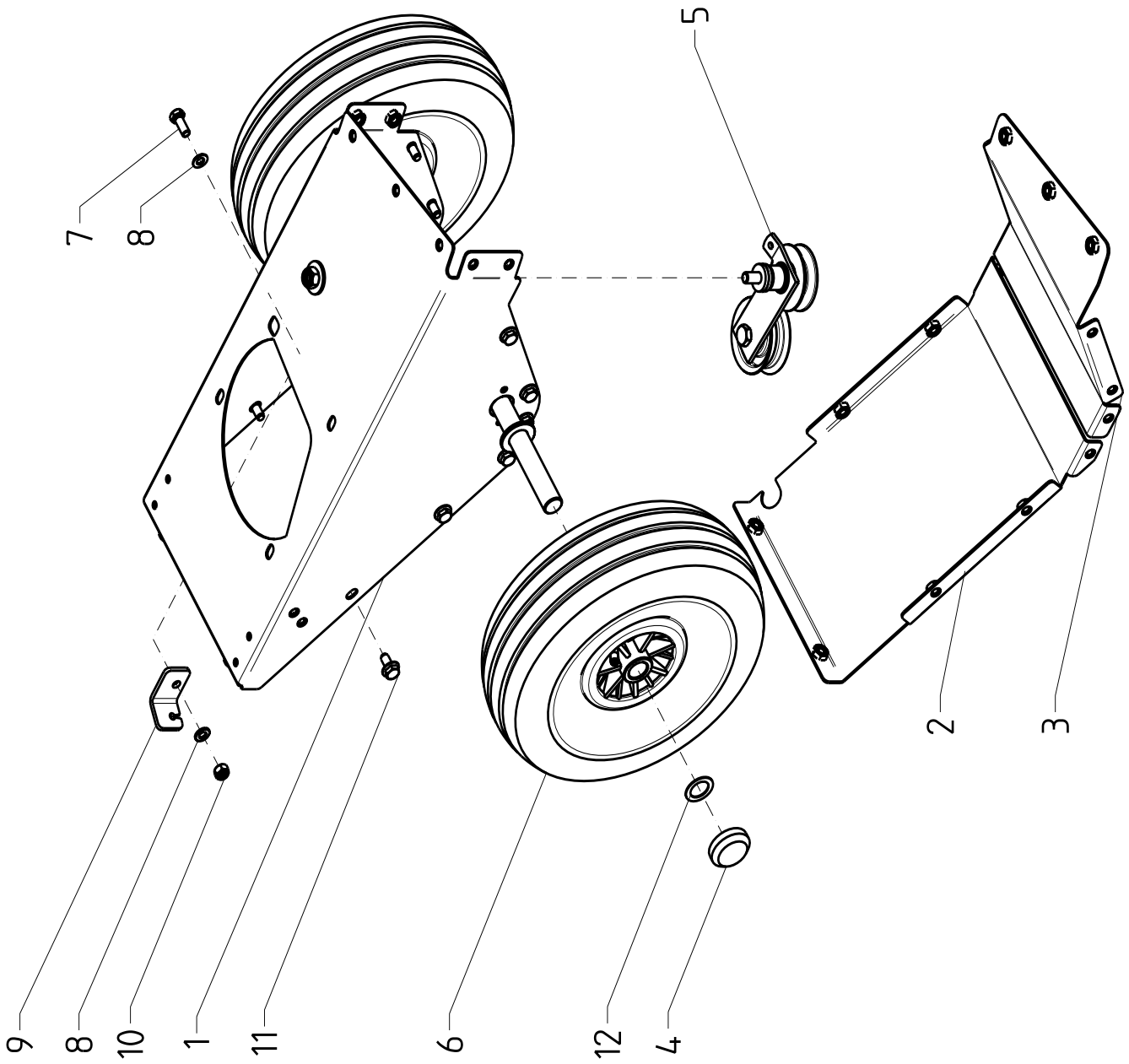
# Motor Honda GCV 160

Motor über den Honda-Fachhändler beziehen.



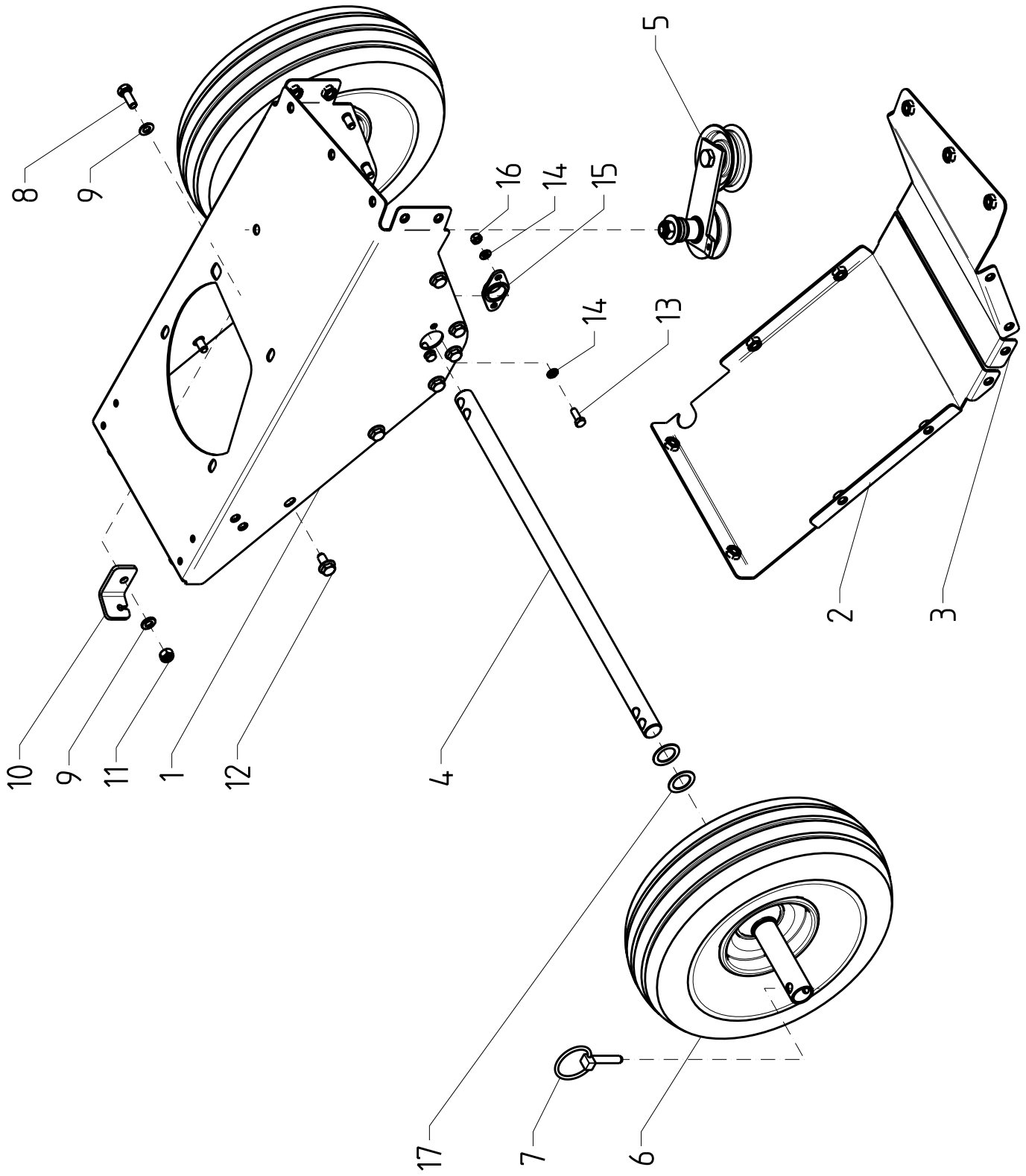
| Pos.-Nr.<br>Rep. | Bestellnummer<br>Réfarence   | Anzahl<br>Qté. | Bezeichnung       | Désignation         | Description           | Descrizione          | Benevnelse     | Bemerkung<br>Remarque<br>Remarks<br>Osservazione<br>Bemerkninger |
|------------------|------------------------------|----------------|-------------------|---------------------|-----------------------|----------------------|----------------|--|
| Pos.<br>Pos.     | Article number<br>Nr. codice | Quant.<br>Q.tà |                   |                     |                       |                      |                |  |
| Bilde-Nr.        | Bestillings-Nr               | Antall         |                   |                     |                       |                      |                |  |
| (1)              | HB-112-311                   | 1              | Spezialkeilriemen | Courroie            | Vbelt                 | Cinghia              | Kilerem        |  |
| 2                | DX-001-143e                  | 1              | Keilriemenscheibe | Poulie              | Vbelt pulley          | Puleggia             | Kileremskive   |  |
| 3                | KH-030-056                   | 1              | Zollpaßfeder      | Ressort au pouce    | Parallel key          | Linguetta in pollici | Kile           |  |
| 4                | HO-090-332z                  | 1              | Zoll-6kt-Schraube | Vis au pouce        | Whitworthbolt (screw) | Vite in pollici      | Skru           | 3/8" -24UNF- 1"  |
| 5                | DA-332-120z                  | 1              | Scheibe           | Rondelle            | Washer                | Rondella             | Skive          |  |
| 6                | DC-030-016z                  | 1              | Keilriemenführung | Guidage de courroie | Vbelt guide           | Guida cinghia        | Kileremsføring |  |
| 7                | HO-010-088z                  | 2              | Sechskantschraube | Vis à six pans      | Hexagon bolt          | Vite esagonale       | Sekskantskrue  | M8x45  |
| 8                | HW-030-008z                  | 6              | Scheibe           | Rondelle            | Washer                | Rondella             | Skive          | R 9.0  |
| 9                | HO-010-087z                  | 2              | Sechskantschraube | Vis à six pans      | Hexagon bolt          | Vite esagonale       | Sekskantskrue  | M8x40  |
| 10               | HW-010-007z                  | 4              | Scheibe           | Rondelle            | Washer                | Rondella             | Skive          | B 8.4  |
| 11               | HR-010-005z                  | 4              | Sechskantmutter   | Écrou à six pans    | Hexagon nut           | Dado esagonale       | Sekskantmutter | M8   |
| 12               | DC-361-085z                  | 1              | Distanzring       | Entretoise          | Spacer ring           | Anello distanziale   | Ring           |  |

tw50



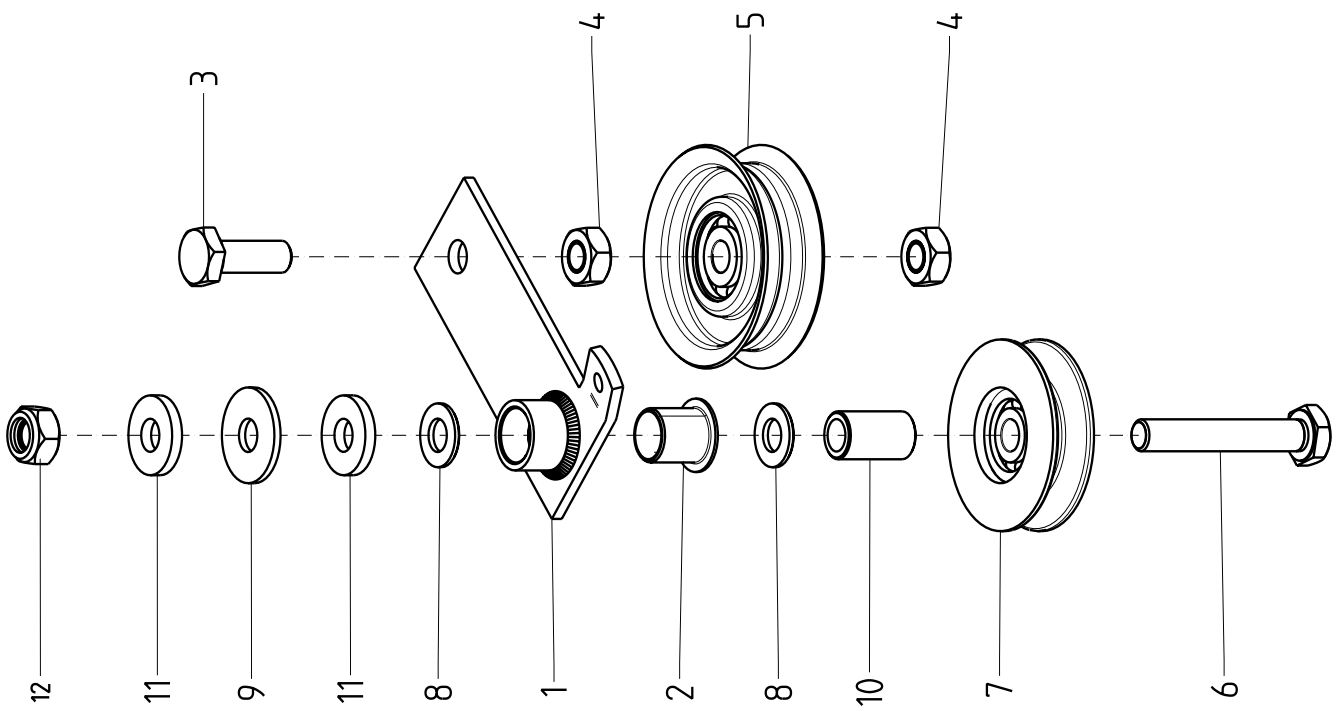
| Pos.-Nr.<br>Rep. | Bestellnummer<br>Réfarence   | Anzahl<br>Qté. | Bezeichnung              | Désignation           | Description     | Descrizione        | Benevnelse       | Bemerkung<br>Remarque<br>Remarks<br>Osservazione<br>Bemerkninger |
|------------------|------------------------------|----------------|--------------------------|-----------------------|-----------------|--------------------|------------------|--|
| Pos.<br>Pos.     | Article number<br>Nr. codice | Quant.<br>Q.tà | (D)                      | (F)                   | (GB)            | (I)                | (N)              |  |
| Bilde-Nr.        | Bestillings-Nr               | Antall         |                          |                       |                 |                    |                  |  |
| 1                | AD-462-140-3000              | 1              | Motorconsole             | Embase moteur         | Engine plate    | Mensola motore     | Motorfeste       |  |
| 2                | AD-460-141-3000              | 1              | Bodenblech               | Fond en tôle          | Bottom plate    | Lamierino          | Deksel           |  |
| 3                | AD-460-145-3000              | 1              | Bodenblech               | Fond en tôle          | Bottom plate    | Lamierino          | Deksel           |  |
| 4                | HU-061-020                   | 2              | Federscheibe mit Kappe   | Rondelle de ressort   | Spring washer   | Rondella elastica  | Sprengskive      |  |
| (5)              | AD-460-055TS                 | 1              | Keilriemenspanner        | Tendeur de courroie   | Vbelt tensioner | Tendicinghia       | Kilierenstrammer |  |
| (6)              | AD-461-051                   | 2              | Rad kpl.                 | Roue                  | Wheel           | Ruota              | Hjul             |  |
| 7                | HO-020-083z                  | 1              | Sechskantschraube        | Vis à six pans        | Hexagon bolt    | Vite esagonale     | Sekskantskrue    | M8x20  |
| 8                | HW-010-007z                  | 2              | Scheibe                  | Rondelle              | Washer          | Rondella           | Skive            | B 8.4  |
| 9                | DA-292-245z                  | 1              | Bowdenzughalter          | Serre câble           | Cable support   | Supporto cavo      | Wireholder       |  |
| 10               | HR-030-005z                  | 1              | Sicherungsmutter         | Écrou de sûreté       | Locknut         | Dado autobloccante | Låsemutter       | M8   |
| 11               | HP-035-082z                  | 14             | 6kt-Schraube mit Flansch | Vis (f)               | Bolt            | Vite (Viti)        | Skru             | M8x16  |
| 12               | HJ-010-307                   | 2              | Kunststoffscheibe        | Rondelle en plastique | Washer          | Rondella           | Skive            |  |






tw50s

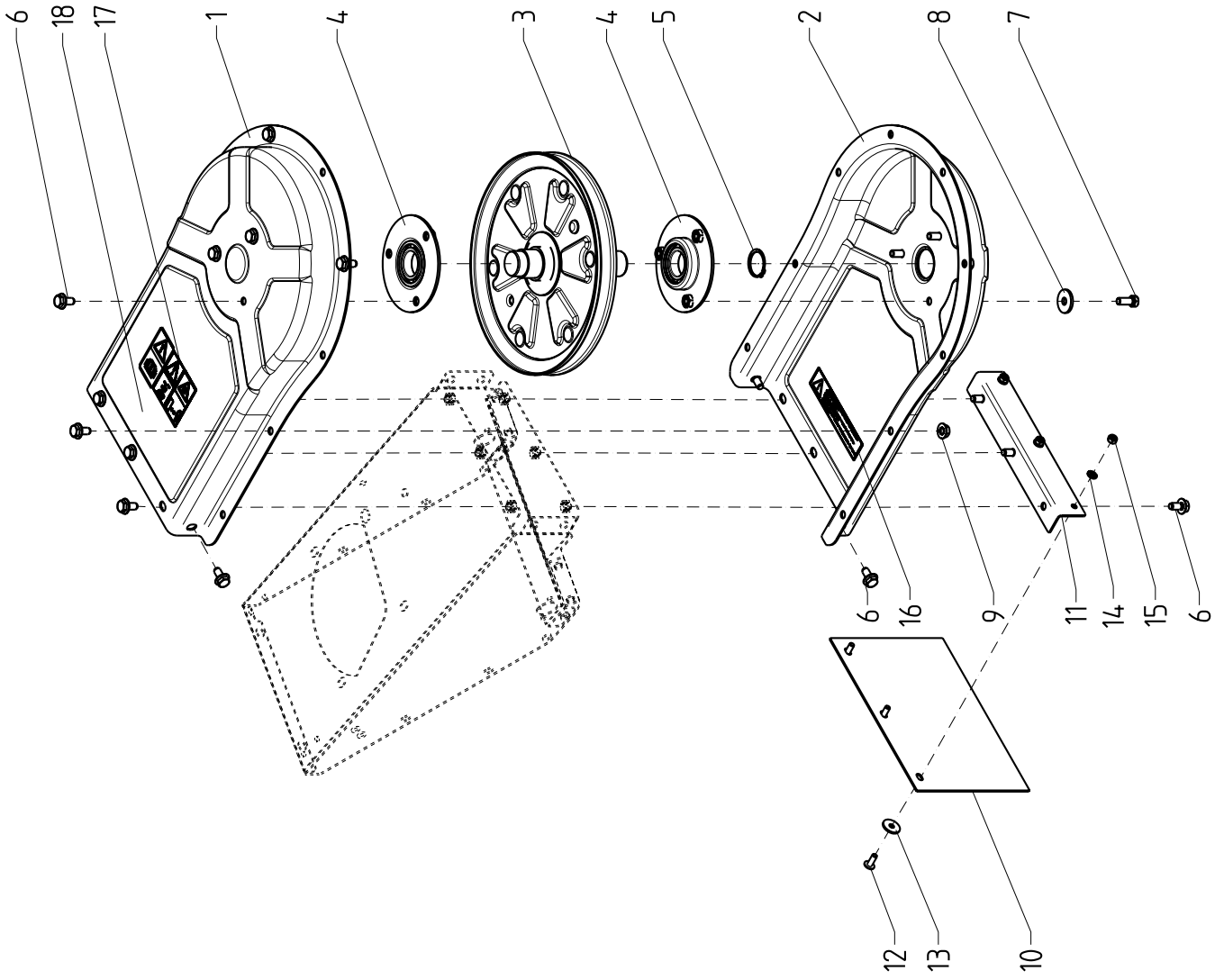


| Pos.-Nr.<br>Rep.          | Bestellnummer<br>Réfrence                      | Anzahl<br>Qté.           | Bezeichnung              | Désignation                 | Description            | Descrizione                 | Benevnelse       | Bemerkung<br>Remarque<br>Remarks<br>Osservazione<br>Bemerkninger |
|---------------------------|--|--------------------------|--------------------------|-----------------------------|------------------------|-----------------------------|------------------|--|
| Pos.<br>Pos.<br>Bilde-Nr. | Article number<br>Nr. codice<br>Bestillings-Nr | Quant.<br>Q.tà<br>Antall | (D)                      | (F)                         | (GB)                   | (I)                         | (N)              |  |
| 1                         | AD-460-140-3000                                | 1                        | Motorconsole             | Embase moteur               | Engine plate           | Mensola motore              | Motorfeste       |  |
| 2                         | AD-460-141-3000                                | 1                        | Bodenblech               | Fond en tôle                | Bottom plate           | Lamierino                   | Deksel           |  |
| 3                         | AD-460-145-3000                                | 1                        | Bodenblech               | Fond en tôle                | Bottom plate           | Lamierino                   | Deksel           |  |
| 4                         | DC-181-124z                                    | 1                        | Achse                    | Arbre                       | Axle                   | Asse                        | Aksel            |  |
| (5)                       | AD-460-055TS                                   | 1                        | Keilriemenspanner        | Tendeur de courroie         | Vbelt tensioner        | Tendicinghia                | Kileremstrammer  |  |
| (6)                       | AD-460-051                                     | 2                        | Rad kpl.                 | Roue                        | Wheel                  | Ruota                       | Hjul             |  |
| 7                         | AZ-008-004                                     | 2                        | Klappsplint              | Goupille                    | Hinged pin             | Spina sicurezza             | Orepinne         |  |
| 8                         | HO-020-083z                                    | 1                        | Sechskantschraube        | Vis à six pans              | Hexagon bolt           | Vite esagonale              | Sekskantskrue    | M8x20  |
| 9                         | HW-010-007z                                    | 2                        | Scheibe                  | Rondelle                    | Washer                 | Rondella                    | Skive            | B 8.4  |
| 10                        | DA-292-245z                                    | 1                        | Bowdenzughalter          | Serre câble                 | Cable support          | Supporto cavo               | Wireholder       |  |
| 11                        | HR-030-005z                                    | 1                        | Sicherungsmutter         | Écrou de sûreté             | Locknut                | Dado autobloccante          | Låsemutter       | M8   |
| 12                        | HP-035-082z                                    | 14                       | 6kt-Schraube mit Flansch | Vis (f)                     | Bolt                   | Vite (Viti)                 | Skru             | M8x16  |
| 13                        | HO-020-054z                                    | 4                        | Sechskantschraube        | Vis à six pans              | Hexagon bolt           | Vite esagonale              | Sekskantskrue    | M8x16  |
| 14                        | HW-010-004z                                    | 8                        | Scheibe                  | Rondelle                    | Washer                 | Rondella                    | Skive            | B 6,4  |
| 15                        | HJ-021-028                                     | 2                        | Kunststoff Gleitlager    | Paliers lisses en plastique | Plastic plain bearings | Cuscinetti in tecnopolimero | Plasticgidelagre |  |
| 16                        | HR-030-004z                                    | 4                        | Sicherungsmutter         | Écrou de sûreté             | Locknut                | Dado autobloccante          | Låsemutter       | M6 DIN 985   |
| 17                        | HJ-010-307                                     | 4                        | Kunststoffscheibe        | Rondelle en plastique       | Washer                 | Rondella                    | Skive            |  |

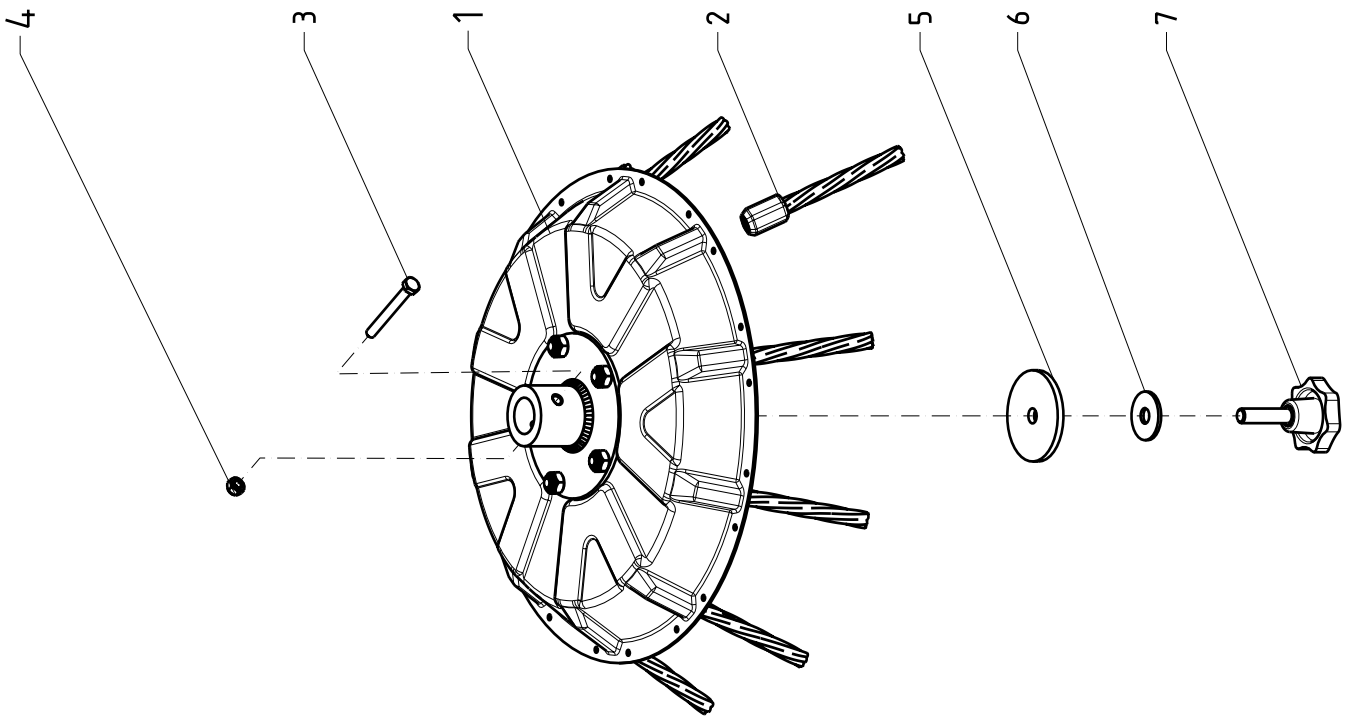
AD-460-055TS



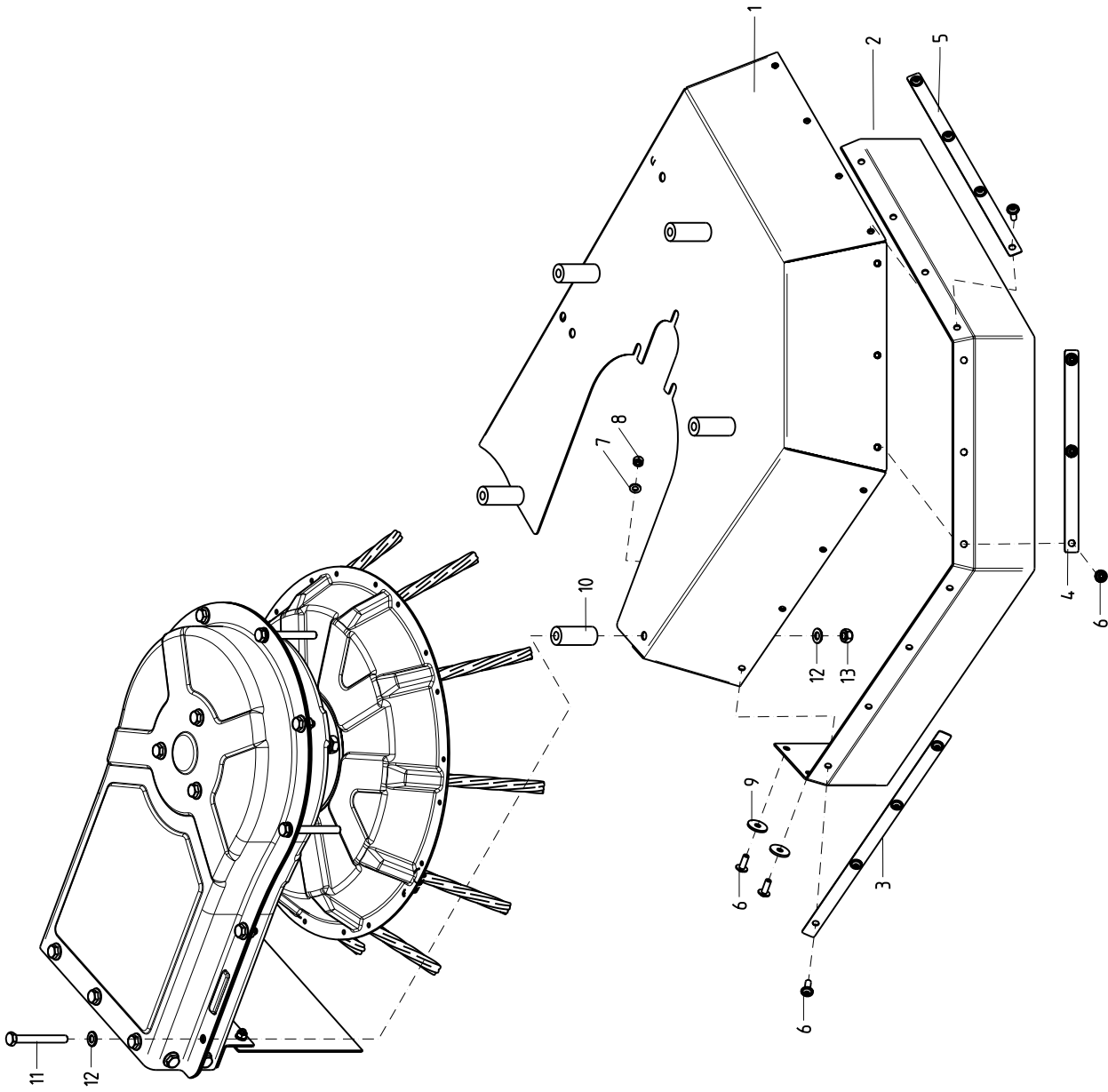
| Pos.-Nr.<br>Rep. | Bestellnummer<br>Réfrence | Anzahl<br>Qté. | Bezeichnung   | Désignation   | Description   | Descrizione   | Benevnlse   | Bemerkung<br>Remarks<br>Osservazione<br>Bemerkninger |
|------------------|---------------------------|----------------|---|---|---|---|---|--|
| Pos.             | Article number            | Quant.         |   |  |  |  |  |  |
| Pos.             | Nr. codice                | Q.tà           |  |   |   |   |   |  |
| Bilde-Nr.        | Bestillings-Nr            | Antall         |   |   |   |   |   |  |
| 1                | AD-310-140z               | 1              | Spanner   | Tendeur   | Tensioner   | Tenditore   | Strammer  |  |
| 2                | HJ-021-011                | 1              | Bundbuchse  | Coussinet   | Collar bush   | Bussola frangiata   | Foring  |  |
| 3                | HO-020-115z               | 1              | Sechskantschraube   | Vis à six pans  | Hexagon bolt  | Vite esagonale  | Sekskantskrue   | M10x30   |
| 4                | HR-010-006z               | 2              | Sechskantmutter   | Écrou à six pans  | Hexagon nut   | Dado esagonale  | Sekskantmutter  | M10  |
| 5                | AZ-002-001                | 1              | Spannrolle  | Galet tendeur   | Tensioning pulley   | Rullo tenditore   | Strammerull   |  |
| 6                | HO-010-122z               | 1              | Sechskantschraube   | Vis à six pans  | Hexagon bolt  | Vite esagonale  | Sekskantskrue   | M10x65   |
| 7                | AZ-002-005                | 1              | Spannrolle  | Galet tendeur   | Tensioning pulley   | Rullo tenditore   | Strammerull   |  |
| 8                | HW-010-009z               | 2              | Scheibe   | Rondelle  | Washer  | Rondella  | Skive   | A 10,5   |
| 9                | HW-060-009z               | 1              | Scheibe   | Rondelle  | Washer  | Rondella  | Skive   | A 10,5   |
| 10               | DC-131-029z               | 1              | Abstandshülse   | Douille d'écartement  | Spacer tube   | Boccola distanziale   | Avstandshylse   |  |
| 11               | HW-050-009z               | 2              | Scheibe   | Rondelle  | Washer  | Rondella  | Skive   |  |
| 12               | HR-030-006z               | 1              | Sicherungsmutter  | Écrou de sûreté   | Locknut   | Dado autobloccante  | Låsemutter  | M10  |








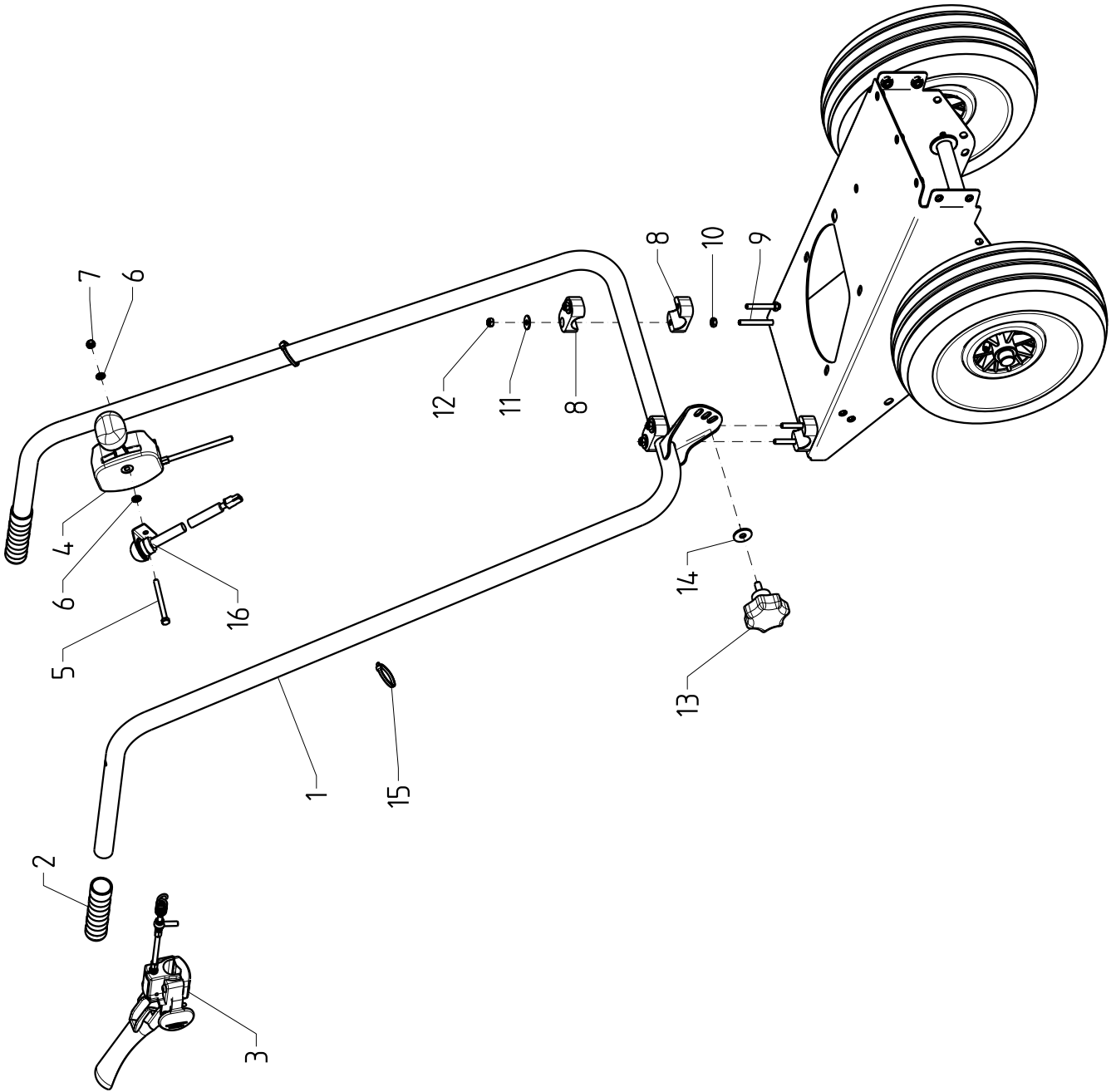
| Pos.-Nr.<br>Rep. | Bestellnummer<br>Réfrence    | Anzahl<br>Qté. | Bezeichnung              | Désignation      | Description            | Descrizione        | Benevnelse        | Bemerkung<br>Remarque<br>Remarks<br>Osservazione<br>Bemerkninger |
|------------------|------------------------------|----------------|--------------------------|------------------|------------------------|--------------------|-------------------|--|
| Pos.<br>Pos.     | Article number<br>Nr. codice | Quant.<br>Q.tà | (D)                      | (F)              | (GB)                   | (I)                | (N)               |  |
| Bilde-Nr.        | Bestillings-Nr               | Antall         |                          |                  |                        |                    |                   |  |
| 1                | DA-201-057-3000              | 1              | Vorderteil               | Bloc avant       | Moving drive assy.     | Parte, anteriore   | Forsat            |  |
| 2                | DA-201-056-3000              | 1              | Deckblech                | Tôle             | Sheet steel            | Lamierino          | Deksel            |  |
| 3                | AD-460-143z                  | 1              | Keilriemenscheibe        | Poulie           | Vbelt pulley           | Puleggia           | Kilerenskiive     |  |
| 4                | AI-043-142-9005              | 2              | Lagerflansch             | Palier           | Bearing flange         | Flangia cuscinetto | Lagerflens        |  |
| 5                | HU-010-030                   | 1              | Sicherungsring           | Anneau d'arrêt   | Retaining ring         | Sege               | Semering          | A 30x1.5   |
| 6                | HP-035-082z                  | 17             | 6kt-Schraube mit Flansch | Vis (f)          | Bolt                   | Vite (Viti)        | Skrue             | M8x16  |
| 7                | HO-020-083z                  | 3              | Sechskantschraube        | Vis à six pans   | Hexagon bolt           | Vite esagonale     | Sekskantskrue     | M8x20  |
| 8                | HW-030-008z                  | 3              | Scheibe                  | Rondelle         | Washer                 | Rondella           | Skiv              | R 9.0  |
| 9                | HR-035-005z                  | 4              | 6kt-Mutter mit Flansch   | Écrou à six pans | Hexagon nut            | Dado esagonale     | Sekskantmutter    | M8   |
| (10)             | HK-005-052                   | 1              | Gummileiste              | Bande caoutchouc | Rubber bar             | Lista gomma        | Gummilist         |  |
| 11               | DA-200-894-3000              | 1              | Winkelblech              | Cornière         | Attaching bracket      | Rinvio ad angolo   | Deksel            |  |
| 12               | HP-056-054z                  | 3              | Flako-Schraube m Flansch | Vis tête plate   | Slotted pan head screw | Vite testa piana   | Splittpinne       | M6x16  |
| 13               | HW-030-005z                  | 3              | Scheibe                  | Rondelle         | Washer                 | Rondella           | Skiv              | R6.6   |
| 14               | HW-010-004z                  | 3              | Scheibe                  | Rondelle         | Washer                 | Rondella           | Skiv              | B6.4   |
| 15               | HR-030-004z                  | 3              | Sicherungsmutter         | Écrou de sûreté  | Locknut                | Dado autobloccante | Låsemutter        | M6   |
| 16               | KD-003-002                   | 2              | Folienkleber             | Film adhésif     | adhesive film          | pellicola adesiva  | selvklebende film |  |
| 17               | KD-003-122                   | 1              | Folienkleber             | Film adhésif     | adhesive film          | pellicola adesiva  | selvklebende film |  |
| 18               | KD-003-156                   | 1              | Folienkleber             | Film adhésif     | adhesive film          | pellicola adesiva  | selvklebende film |  |








| Pos.-Nr.<br>Rep. | Bestellnummer<br>Réfarence   | Anzahl<br>Qté. | Bezeichnung       | Désignation     | Description  | Descrizione        | Benevnelse    | Bemerkung<br>Remarque<br>Remarks<br>Osservazione<br>Bemerkninger |
|------------------|------------------------------|----------------|-------------------|-----------------|--------------|--------------------|---------------|--|
| Pos.<br>Pos.     | Article number<br>Nr. codice | Quant.<br>Q.tà |                   |                 |              |                    |               |  |
| Bilde-Nr.        | Bestillings-Nr               | Antall         |                   |                 |              |                    |               |  |
| 1                | AD-460-050TS                 | 1              | Werkzeugkopf      | Tête d'outil    | Tool head    | testa dell'atrezzo | verktøyhode   |  |
| (2)              | AD-460-101                   | 10             | Drahtborste       | Poils fil       | Wire bristle | Filo setola        | Ledning bust  |  |
| 3                | HO-010-093z                  | 1              | Sechskantschraube | Vis à six pans  | Hexagon bolt | Vite esagonale     | Sekskantskrue | M8x70  |
| 4                | HR-030-005z                  | 1              | Sicherungsmutter  | Écrou de sûreté | Locknut      | Dado autobloccante | Låsemutter    | M8   |
| 5                | DA-352-048z                  | 1              | Scheibe           | Rondelle        | Washer       | Rondella           | Skive         | B13  |
| 6                | HW-060-011z                  | 1              | Scheibe           | Rondelle        | Washer       | Rondella           | Skive         | M12x50 DIN6336   |
| 7                | HJ-010-308                   | 1              | Sterngriff        | Molette         | Star grip    | Pomello stella     | Handtak       |  |

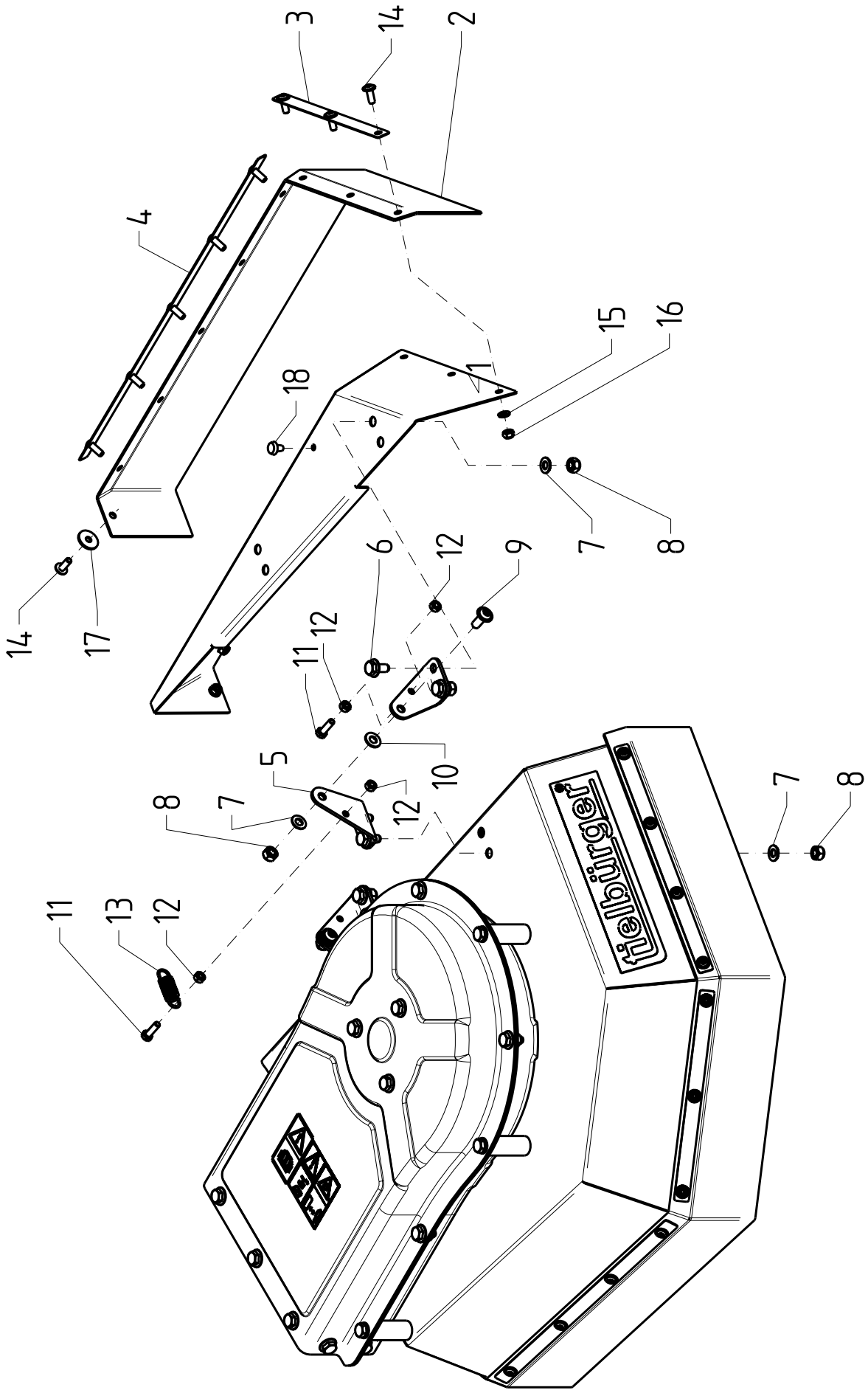






| Pos.-Nr.<br>Rep.          | Bestellnummer<br>Réfrence                      | Anzahl<br>Qté.           | Bezeichnung   | Désignation   | Description   | Descrizione   | Benevnelse  | Bemerkung<br>Remarque<br>Remarks<br>Osservazione<br>Bemerkninger |
|---------------------------|--|--------------------------|---|---|---|---|---|--|
| Pos.<br>Pos.<br>Bilde-Nr. | Article number<br>Nr. codice<br>Bestillings-Nr | Quant.<br>Q.tà<br>Antall |  |  |  |  |  |  |
| 1                         | DA-180-447-3000                                | 1                        | Prallschutz   | Protecteur  | Protection oder Cover   | Protezione  | Deksel  |  |
| (2)                       | HK-005-054                                     | 1                        | Gummileiste   | Bande caoutchouc  | Rubber bar  | Lista gomma   | Gummilist   |  |
| 3                         | DA-140-648                                     | 1                        | Band  | Tôle  | Sheet steel   | Lamierino   | Deksel  |  |
| 4                         | DA-140-649                                     | 1                        | Band  | Tôle  | Sheet steel   | Lamierino   | Deksel  |  |
| 5                         | DA-140-650                                     | 1                        | Band  | Tôle  | Sheet steel   | Lamierino   | Deksel  |  |
| 6                         | HP-056-054z                                    | 13                       | Flako-Schraube m Flansch  | Vis tête plate  | Slotted pan head screw  | Vite testa piana  | Spiltpinne  | M6x16  |
| 7                         | HW-010-004z                                    | 11                       | Scheibe   | Rondelle  | Washer  | Rondella  | Skive   | B6.4   |
| 8                         | HR-030-004z                                    | 13                       | Sicherungsmutter  | Écrou de sûreté   | Locknut   | Dado autobloccante  | Låsemutter  | M6   |
| 9                         | HW-030-005z                                    | 2                        | Scheibe   | Rondelle  | Washer  | Rondella  | Skive   | R6.6   |
| 10                        | DC-181-126z                                    | 5                        | Abstandshülse   | Douille d'écartement  | Spacer tube   | Boccola distanziale   | Avstandshyls  | M8x70  |
| 11                        | HO-010-093z                                    | 5                        | Sechskantschraube   | Vis à six pans  | Hexagon bolt  | Vite esagonale  | Sekskantskrue   | B8.4   |
| 12                        | HW-010-007z                                    | 10                       | Scheibe   | Rondelle  | Washer  | Rondella  | Skive   | M8   |
| 13                        | HR-030-005z                                    | 5                        | Sicherungsmutter  | Écrou de sûreté   | Locknut   | Dado autobloccante  | Låsemutter  |  |



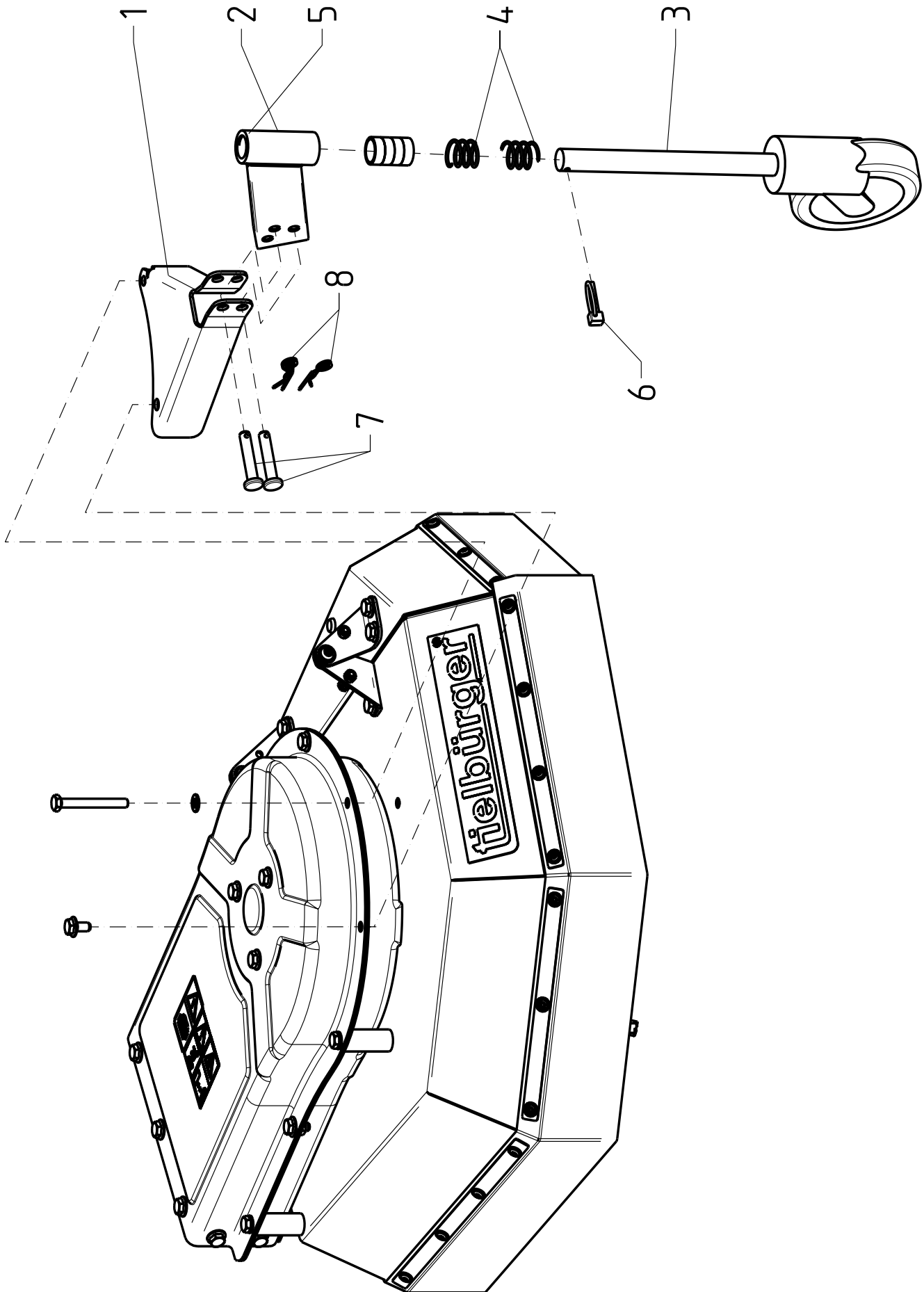
| Pos.-Nr.<br>Rep.  | Bestellnummer<br>Réfrence                      | Anzahl<br>Qté.           | Bezeichnung   | Désignation   | Description   | Descrizione   | Benevnelse  | Bemerkung<br>Remarks<br>Osservazione<br>Bemerkninger |
|-------------------|--|--------------------------|---|---|---|---|---|--|
| Pos.<br>Bilde-Nr. | Article number<br>Nr. codice<br>Bestillings-Nr | Quant.<br>Q.tà<br>Antall |  |  |  |  |  |  |
| 1                 | AD-460-144p9005                                | 1                        | Lenker  | Mancheron   | Handle bars   | Manubrio  | Styre   |  |
| 2                 | HJ-010-249                                     | 2                        | PVC-Handgriff   | Poignée   | Handle  | Leva  | Handtak   |  |
| (3)               | AZ-007-114                                     | 1                        | Bowdenzug   | Câble   | (Bowden) cable  | Cavo  | Wire  |  |
| (4)               | AZ-006-118                                     | 1                        | Gashebel  | Accélérateur  | Throttle lever  | Leva gas  | Gasshendel  |  |
| 5                 | HO-010-064z                                    | 1                        | Sechskantschraube   | Vis à six pans  | Hexagon bolt  | Vite esagonale  | Sekskantskrue   | M6x65  |
| 6                 | HW-010-004z                                    | 2                        | Scheibe   | Rondelle  | Washer  | Rondella  | Skive   | B6,4   |
| 7                 | HR-030-004z                                    | 1                        | Sicherungsmutter  | Écrou à six pans  | Hexagon nut   | Dado esagonale  | Sekskantmutter  | M6   |
| 8                 | HJ-010-199                                     | 2                        | Rohrschelle   | Collier   | Pipe clamp  | Morsetto del tubo   | Schel   |  |
| 9                 | HO-020-061z                                    | 4                        | Sechskantschraube   | Vis à six pans  | Hexagon bolt  | Vite esagonale  | Sekskantskrue   | M6x50  |
| 10                | HR-010-004z                                    | 4                        | Sechskantmutter   | Écrou à six pans  | Hexagon nut   | Dado esagonale  | Sekskantmutter  | M6   |
| 11                | HW-060-004z                                    | 4                        | Scheibe   | Rondelle  | Washer  | Rondella  | Skive   | A6,4   |
| 12                | HR-030-004z                                    | 4                        | Sicherungsmutter  | Écrou à six pans  | Hexagon nut   | Dado esagonale  | Sekskantmutter  | M6   |
| 13                | HJ-010-063                                     | 1                        | Sterngriff  | Molette   | Star grip   | Pomello stella  | Handtak   |  |
| 14                | HW-060-007z                                    | 1                        | Scheibe   | Rondelle  | Washer  | Rondella  | Skive   | A8,4   |
| 15                | HJ-010-024                                     | 2                        | Kabelbinder   | Collier en plastique  | Strap   | Legaccio  | Kabelfester   |  |
| 16                | AD-384-051TS                                   | 1                        | Kabelbaum   | Harnais   | Harness   | Imbracatura   | Sele  | B&S 675iS  |

Zubehör Seitliche Schutzabdeckung tw50/Standard bei tw50s



| Pos.-Nr.<br>Rep. | Bestellnummer<br>Réfrence | Anzahl<br>Qté. | Bezeichnung   | Désignation   | Description   | Descrizione   | Benevnelse  | Bemerkung<br>Remarque<br>Remarks<br>Osservazione<br>Bemerkninger |
|------------------|---------------------------|----------------|---|---|---|---|---|--|
|                  |                           |                |  |  |  |  |  |  |

|      |                 |    |                          |                       |                        |                    |               |       |
|------|-----------------|----|--------------------------|-----------------------|------------------------|--------------------|---------------|-------|
| 1    | DA-180-448-3000 | 1  | Prallschutz              | Protecteur            | Protection oder Cover  | Protezione         | Deksel        |       |
| (2)  | HK-005-055      | 1  | Gummileiste              | Bande caoutchouc      | Rubber bar             | Lista gomma        | Gummilist     |       |
| 3    | DA-140-651      | 1  | Band                     | Tôle                  | Sheet steel            | Lamierino          | Deksel        |       |
| 4    | DA-140-652      | 1  | Band                     | Tôle                  | Sheet steel            | Lamierino          | Deksel        |       |
| 5    | DA-240-825z     | 4  | Scharnierwinkel          | Charnière             | Hinge                  | Cerniera           | Scharnier     |       |
| 6    | HP-035-082z     | 8  | 6kt-Schraube mit Flansch | Vis (f)               | Bolt                   | Vite (Viti)        | Skrue         | M8x16 |
| 7    | HW-010-007z     | 10 | Scheibe                  | Rondelle              | Washer                 | Rondella           | Skive         | B8.4  |
| 8    | HR-030-005z     | 10 | Sicherungsmutter         | Écrou de sûreté       | Locknut                | Dado autobloccante | Låsemutter    | M8    |
| 9    | HP-056-083z     | 2  | Flako-Schraube m Flansch | Vis tête plate        | Slotted pan head screw | Vite testa piana   | Splittpinne   | M8x20 |
| 10   | HJ-010-248      | 2  | Kunststoffscheibe        | Rondelle en plastique | Washer                 | Rondella           | Skive         |       |
| 11   | HO-020-055z     | 2  | Sechskantschraube        | Vis à six pans        | Hexagon bolt           | Vite esagonale     | Sekskantskrue | M6x20 |
| 12   | HR-010-004z     | 4  | Sechskantmutter          | Écrou à six pans      | Hexagon nut            | Dado esagonale     | M6            |       |
| (13) | HI-010-022-9005 | 1  | Zugfeder                 | Ressort de traction   | Extension spring       | Molla di trazione  | Fjær          |       |
| 14   | HP-056-054z     | 9  | Flako-Schraube m Flansch | Vis tête plate        | Slotted pan head screw | Vite testa piana   | Splittpinne   | M6x16 |
| 15   | HW-010-004z     | 8  | Scheibe                  | Rondelle              | Washer                 | Rondella           | Skive         | B6.4  |
| 16   | HR-030-004z     | 9  | Sicherungsmutter         | Écrou de sûreté       | Locknut                | Dado autobloccante | Låsemutter    | M6    |
| 17   | HW-030-005z     | 1  | Scheibe                  | Rondelle              | Washer                 | Rondella           | Skive         | R6.6  |
| 18   | HK-005-010      | 1  | Zargenpuffer             | Tampon d'encadrement  | Rubber stop            | Tampone telaio     | Demper        |       |



| Pos.-Nr.<br>Rep.  | Bestellnummer<br>Réfarence                     | Anzahl<br>Qté.           | Bezeichnung  | Désignation         | Description        | Descrizione           | Benevnelse  | Bemerkung<br>Remarque<br>Remarks<br>Osservazione<br>Bemerkninger |
|-------------------|--|--------------------------|--------------|---------------------|--------------------|-----------------------|-------------|--|
| Pos.<br>Bilde-Nr. | Article number<br>Nr. codice<br>Bestillings-Nr | Quant.<br>Q.tà<br>Antall |              |                     |                    |                       |             |  |
| 1                 | AD-460-146-9005                                | 1                        | Konsole      | Embase              | Bracket            | Mensola               | Feste       |  |
| 2                 | AD-460-147-9005                                | 1                        | Radträger    | Support de roue     | (wheel) carrier    | Supporto ruota        | Hjulholder  |  |
| (3)               | AD-460-057                                     | 1                        | Stützrad     | Rouesupport         | Supporting wheel   | Ruota supporto        | Hjul        |  |
| (4)               | HI-020-009                                     | 2                        | Druckfeder   | Ressort de pression | Compression spring | Molla di compressione | Fjær        |  |
| 5                 | HJ-051-003                                     | 7                        | Lagerbuchse  | Bague de palier     | Bearing bushing    | Boccola cuscinetto    | Lagerforing |  |
| 6                 | AZ-008-005                                     | 1                        | Klappsplint  | Goupille            | Hinged pin         | Spina sicurezza       | Orepinne    | 4.2  |
| 7                 | KC-001-031z                                    | 2                        | Splintholzen | Boulon              | Clevis pin         | Bullone copiglia      | Splintbolt  | B10  |
| 8                 | KG-011-007z                                    | 2                        | Federstecker | Aubier              | Hairpin clip       | Spina elastica        | Låsesplint  | 2.0  |